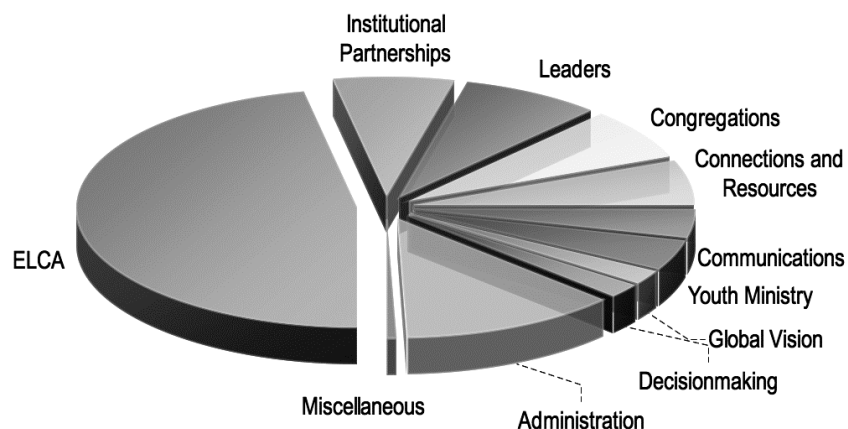


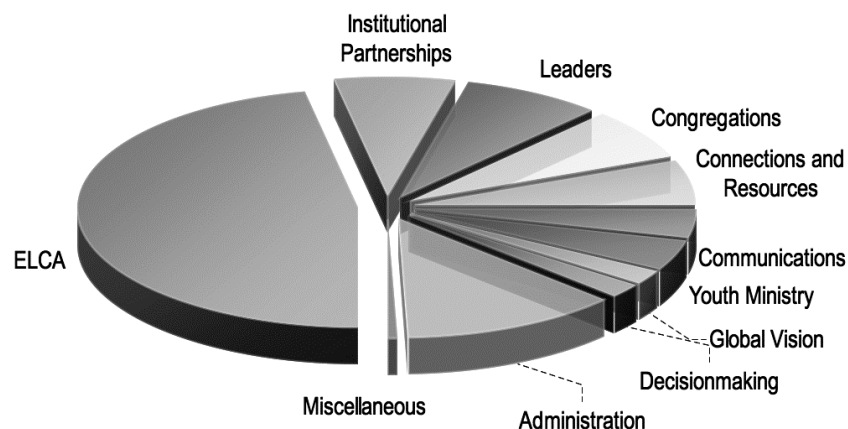
SEPA Synod spending by category



- ▶ **47% of total expense goes to churchwide ministries.** 53% of all congregational mission support paid to the synod is forwarded directly to the churchwide office for support of ministry and mission at the national and international level. Other funds (i.e. interest, designated gifts, etc.) are not forwarded.
- ▶ **7% goes to support partnerships.** These include: Institutions like the Lutheran Theological Seminary at Philadelphia, Muhlenberg College, and the Camp Corporation; Ministries like Campus Ministry and Lutheran Advocacy Ministry in PA; and Coalitions like the Pennsylvania Council of Churches, The Metropolitan Christian Council, and ELCA Region 7.
- ▶ **8% supports development and training of leaders.**
- ▶ **7% supports congregational ministries.**
- ▶ **6% supports connections and resource development.**
- ▶ **4% supports communications.**
- ▶ **4% supports youth ministry.**
- ▶ **2% supports our global vision ministries**
- ▶ **2% is used for decisionmaking** including the annual Synod Assembly and Synod Council meetings.
- ▶ **13% Provides for space, equipment, insurance, depreciation & administrative expenses.**
- ▶ **Less than one percent is used for the bishop's discretionary fund and other miscellaneous expenses.**

New mission starts are funded outside the budget, and are not included in this graph.

SEPA Synod spending by category



- ▶ **47% of total expense goes to churchwide ministries.** 53% of all congregational mission support paid to the synod is forwarded directly to the churchwide office for support of ministry and mission at the national and international level. Other funds (i.e. interest, designated gifts, etc.) are not forwarded.
- ▶ **7% goes to support partnerships.** These include: Institutions like the Lutheran Theological Seminary at Philadelphia, Muhlenberg College, and the Camp Corporation; Ministries like Campus Ministry and Lutheran Advocacy Ministry in PA; and Coalitions like the Pennsylvania Council of Churches, The Metropolitan Christian Council, and ELCA Region 7.
- ▶ **8% supports development and training of leaders.**
- ▶ **7% supports congregational ministries.**
- ▶ **6% supports connections and resource development.**
- ▶ **4% supports communications.**
- ▶ **4% supports youth ministry.**
- ▶ **2% supports our global vision ministries**
- ▶ **2% is used for decisionmaking** including the annual Synod Assembly and Synod Council meetings.
- ▶ **13% Provides for space, equipment, insurance, depreciation & administrative expenses.**
- ▶ **Less than one percent is used for the bishop's discretionary fund and other miscellaneous expenses.**

New mission starts are funded outside the budget, and are not included in this graph.